

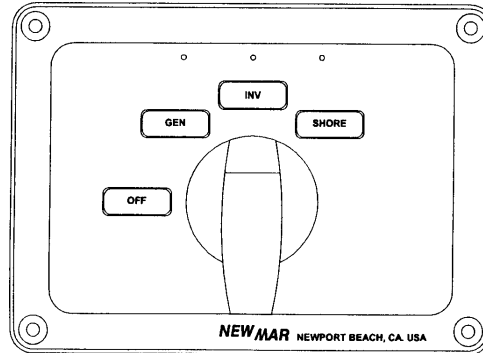
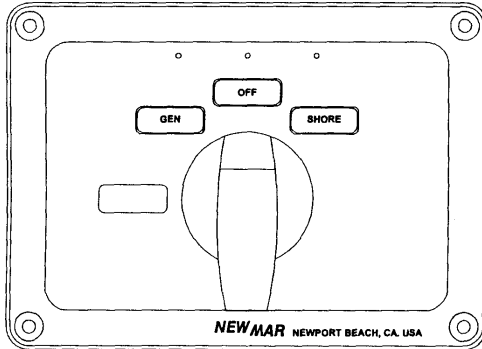
# Ship-Shore Selector Switch Panel Blank

## Model: SSB

### Panel/Switch Assembly Instructions

#### Typical Two-Position-Plus-Off and Three-Position-Plus-Off Configurations:

- Peel-and-stick label set with 22 common AC functions provided
- Mounting surface cut-out template provided

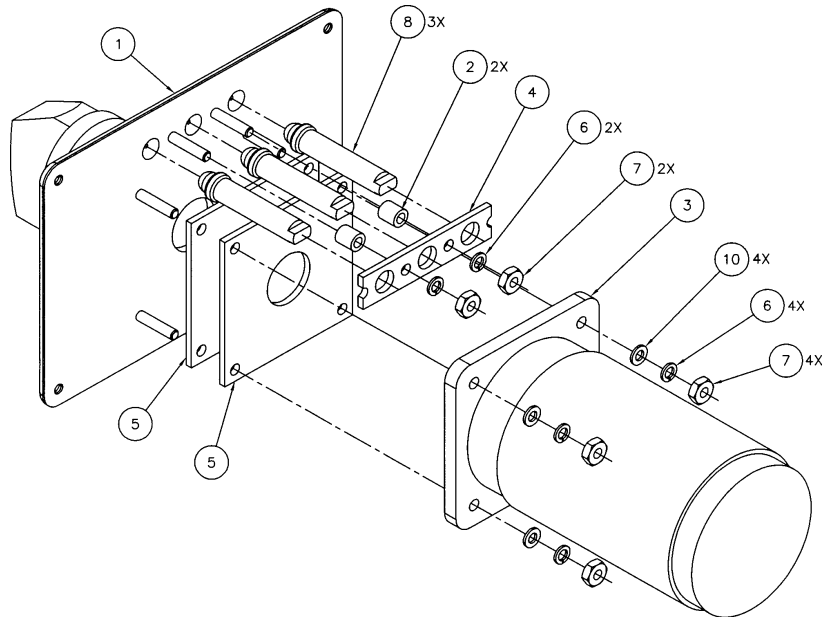


#### Typical Assembly Exploded Diagram:

- Refer to instructions which accompany switch for AC wiring.
- Installation of lights which indicate power available is optional. Light mounting bracket and hardware are provided; AC indicator lights are available from NEWMAR (rated to 250 VAC, suitable for 115 or 230 VAC systems). Connect across AC source—see switch wiring diagram.
  - For 230 VAC system, wire lights hot-to-hot (line-to-line)
  - For 115 VAC system, wire lights hot-to-neutral (line-to-neutral)
- For two-position-plus-off installations, the center light position is unused.

#### Materials List

- 1) SSB panel (1 ea.)
- 2) Nylon spacers for light bracket (2 ea.)
- 3) Switch assembly (provided by installer)
- 4) Indicator light mounting bracket (1 ea.)
- 5) Shim plates (2 ea.)
- 6) Split-lock washers, #6 (6 ea.)
- 7) Hex nuts, #6 (6 ea.)
- 8) Indicator lights (2 or 3ea., provided by installer), 115/230V; red, green or amber; available from NEWMAR
- 9) Panel mounting screws (4 ea.) (not shown in diagram)
- 10) Flat washers, #6 (4 ea.)



The SSB is compatible with NEWMAR 3.0, 7.5 and 15 kW AC Selector Switches.

Switch frame size references:

Salzer: S432 & S440

Kraus & Naimer: S1

**NEWMAR**<sup>®</sup>

ELECTRONIC POWER PRODUCTS  
COMMUNICATION • NAVIGATION  
[www.newmarpower.com](http://www.newmarpower.com)

M02042790  
As of May 2003

#### U.S.A. HEADQUARTERS

P.O. Box 1306, Newport Beach, CA 92663  
Phone: 714-751-0488 Fax: 714-957-1621  
E-Mail: [sales@newmarpower.com](mailto:sales@newmarpower.com)

#### EURO WAREHOUSE

Phone: +31-35-603-2494  
Fax: +31-35-603-2149