



## Torque Series Inverter-Chargers Installation/Operation Manual

Models:

1000TQ-12, 1500TQ-12, 2000TQ-12, & 3000TQ-12



1000TQ-12, 1500TQ-12, and 2000TQ-12

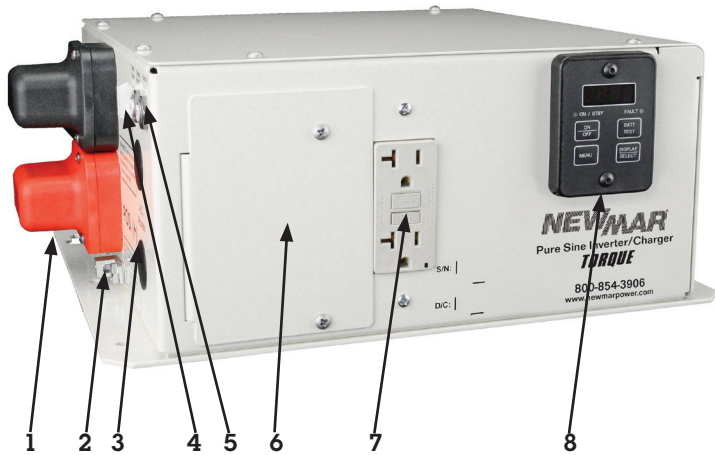


3000TQ-12

<b>TABLE OF CONTENTS</b>	<b>Page</b>
PRODUCT OVERVIEW.....	1
I) SAFETY INSTRUCTIONS.....	2
A) Inverter Safety Instructions.....	2
B) Battery Safety Instructions.....	2
II) MATERIALS PROVIDED.....	2
II) DESIGN FEATURES.....	3
III) MOUNTING.....	3
IV) DC WIRING GAUGE & FUSING.....	4
V) TEMP COMP CABLE CONNECTION.....	4
VI) AC INPUT& OUTPUT CONNECTIONS.....	5
VII) REMOTE STATUS PANEL & REMOTE INV. ON/OFF SWITCH.....	5
VII) DC WIRING.....	5
IX) OPERATION (Using LED Display Panel).....	6
A) Inverter Power Mode (Using LED Display Panel).....	6
B) External Power Mode (Using LED Display Panel).....	7
X) OPERATION (Using Remote ON/OFF tab).....	8
A) Inverter Power Mode (Using Remote ON/OFF tab).....	8
B) External Power Mode (Using Remote ON/OFF tab).....	8
XI) THEORY OF OPERATION.....	8
A) Inverter Power Mode.....	8
B) External Power Mode.....	9
C) Bypass Relay.....	9
D) Battery Charger.....	9
XII) SPECIFICATIONS.....	10
XIII) TROUBLESHOOTING.....	10
A) LED Display Panel Messages.....	10
B) LED Status Chart.....	12
C) Troubleshooting Guide.....	12
XIV) WARRANTY AND CONTACT INFORMATION.....	12
XV) APPENDIX.....	13
A) Ignition Switch Control with the LED Display Panel.....	13
B) 3 Step Battery Charger Recipes with Temp. Comp. Cable.....	13
C) Charger Output vs. Temperature.....	14
D) LED Display Panel Mounting.....	14
E) Optional Accessories.....	14
Remote Extension Kit, model TQ-REK.....	14
ANL Fuse Assembly, model AFB-500.....	14

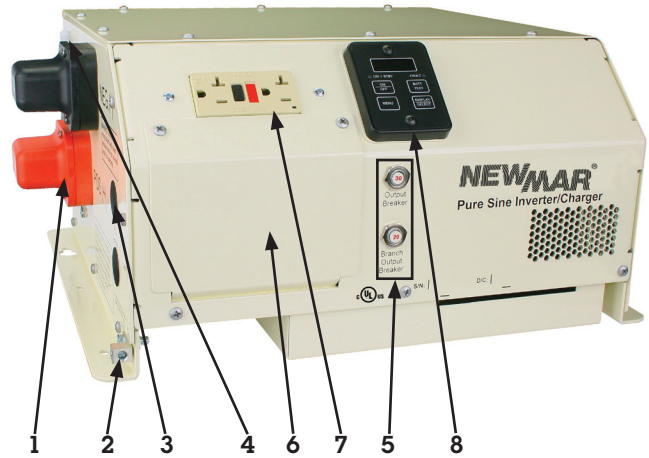
## PRODUCT OVERVIEW

1000TQ-12, 1500TQ-12, and 2000TQ-12

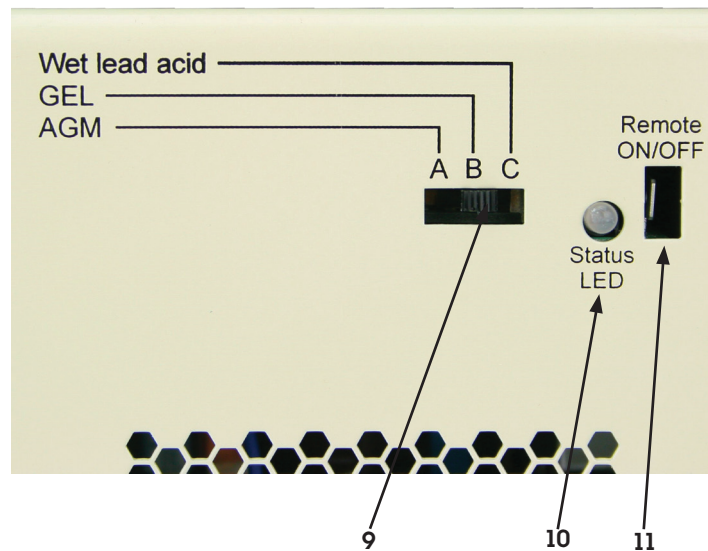


- (1) **DC Input Connections:** Connects to the battery bank.
- (2) **Bonding Lug:** Connects to the ground system.
- (3) **AC Input & Output (hardwired):** Terminal blocks are provided behind front access cover for hardwiring AC Input and Output.
- (4) **Temp. Sense Connector Port:** Connects to the temp. comp. cable
- (5) **Output Breaker, Branch Breaker:** Trips to protect the inverter's internal circuitry from shorted AC loads or overload situations.

3000TQ-12



- (6) **AC Wiring Plate:** Remove this plate to access the AC wiring terminal block or to replace a GFCI outlet.
- (7) **GFCI:** Provides 120VAC output. Only replace with same model GFCI.
- (8) **LED Display, Inverter On/Off, Remote:** The display will give you operating status information as well as allow you to turn the inverter On and Off. This panel can be removed and installed as a remote utilizing the remote kit.



- (9) **Battery Type Selector Switch:** Slide this switch to match the type of batteries that you are using for battery proper charging.
- (10) **Status LED:** This LED will show the operation mode of the inverter and charger. The LED also shows troubleshooting information. See the table in the troubleshooting section at the rear of the manual for further operation mode descriptions.
- (11) **Remote ON/OFF Tab:** Use this tab if you wish to wire an inverter remote control switch. NOTE – The LCD Panel can also be relocated as a remote. This requires model TQ-REK Remote Extension Kit.

## I) SAFETY INSTRUCTIONS

### IMPORTANT

Read this manual before installation, it contains important safety, installation and operating instructions. Save this manual and keep it in a safe place.

Newmar is an ISO 9001:2008 Registered Company.

Newmar uses the following special notices to help prevent injury and/or damage to equipment.

**⚠ DANGER** indicates an imminently hazardous situation which, if not avoided, will result in death or serious injury.

**⚠ WARNING** indicates a potentially hazardous situation which, if not avoided, could result in death or serious injury.

**⚠ CAUTION** indicates a potentially hazardous situation which, if not avoided, may result in minor or moderate injury.

**CAUTION** used without the safety alert symbol indicates a potentially hazardous situation which, if not avoided, may result in property damage.

**NOTE** is used to notify of installation, operation, or maintenance information that is important but not hazard related.

### Safety Listings



Power Inverter, E100666

#### A) Inverter Safety Instructions

**⚠ WARNING:** Power Inverters produce hazardous voltages. To avoid risk of harm or fire, the unit must be properly installed.

**⚠ WARNING:** There are no user serviceable parts inside, do not remove the cover.

**⚠ WARNING:** Power Inverters should not be mounted in a location that may be exposed to rain or spray.

**⚠ WARNING:** Power Inverters should not be installed in a zero clearance enclosure.

**⚠ WARNING:** Damage to the Power Inverter will occur if correct polarity is not observed when installing the inverter's DC input cables.

**⚠ WARNING:** Damage to the Power Inverter will occur if an external AC power source is applied to the inverter's AC hardwire output.

**⚠ WARNING:** Power Inverters contain a circuit breaker and capacitor that may produce a spark upon connection or during normal operation. Do not mount in a confined battery or gas compartment.

**⚠ WARNING:** Be sure the Power Inverter is turned OFF during installation.

**⚠ WARNING:** Be sure the Power Inverter is turned OFF and AC power is disconnected when batteries are being connected, disconnected, serviced, and replaced or personal injury and/or damage to the inverter could result.

#### B) Battery Safety Instructions

**⚠ WARNING:** Working in the vicinity of lead-acid batteries is dangerous. There is a risk of acid exposure.

**⚠ WARNING:** Batteries generate explosive gases during operation.

**⚠ WARNING:** There is risk of high current discharge from shorting a battery that can cause fire and explosion. Use insulated tools during installation.

**⚠ WARNING:** Remove all rings, watches, jewelry or other conductive items before working near the batteries.

**⚠ WARNING:** Inspect the batteries at least once a year for cracks, leaks or swelling.

**⚠ WARNING:** Dispose of the batteries according to local regulations. Do not incinerate batteries; risk of explosion exists.

**⚠ WARNING:** Be sure the Power Inverter is turned OFF and AC power is disconnected when batteries are being connected, disconnected, serviced, and replaced or personal injury and/or damage to the inverter could result.

## II) Materials Provided

1 x Inverter-Charger

1 x Installation/Operation Manual

2 x AC Cord Grips, PN: 588-2114-0

1 x Battery Temp. Compensation Sensor, 20 ft.



DC Power Onboard™

www.newmarpower.com

### III) DESIGN FEATURES

**Design Features:** Thermally controlled cooling fan, GFCI outlet protection, and Remote LED Display Panel or "On/Off" switch hookup.

**Unit Protection:** Automatic electronic short circuit/overload protection, Automatic over temperature shutdown, and AC output circuit breaker(s).

**Battery Protection:** Automatic low battery shutdown at 10.5VDC with in-rush delay.

**Temperature Compensated Charging:** Allows for proper temperature charging across the operating range of the inverter.

**Auto Sleep Mode:** When the LED Display Panel is used, the inverter can be programmed to go to sleep after no load is detected over programmed interval.

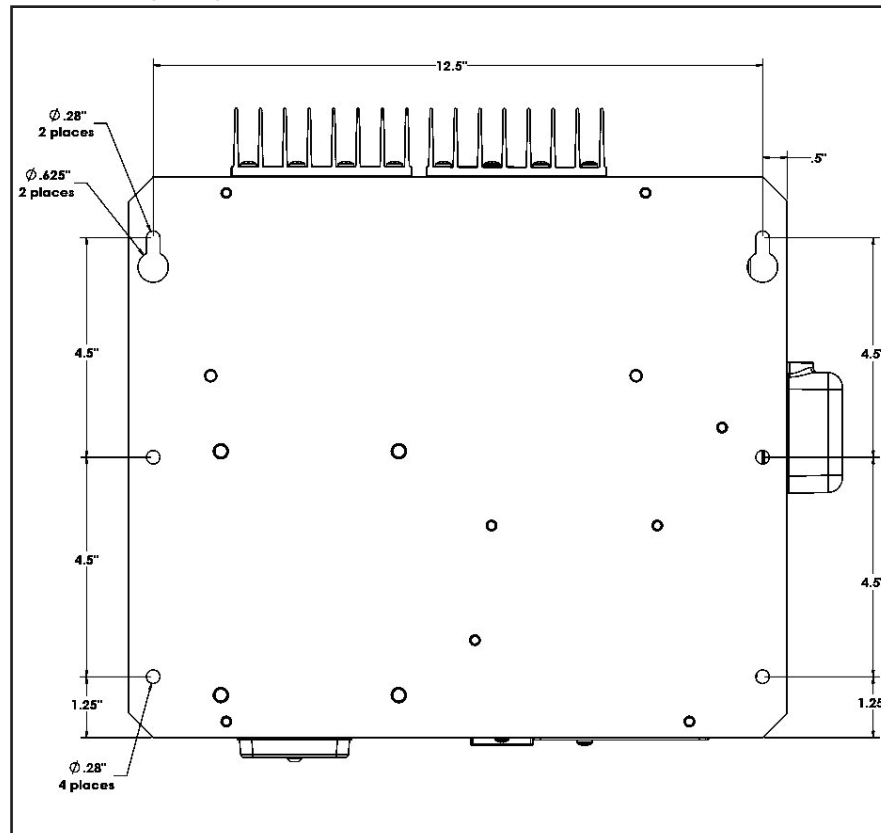
### IV) MOUNTING

The following tools are required for installation: crimper, cable ties, cutter, drill, #2 phillips screw driver, slotted screw driver, tape measure, wire cutters, and wire strippers.

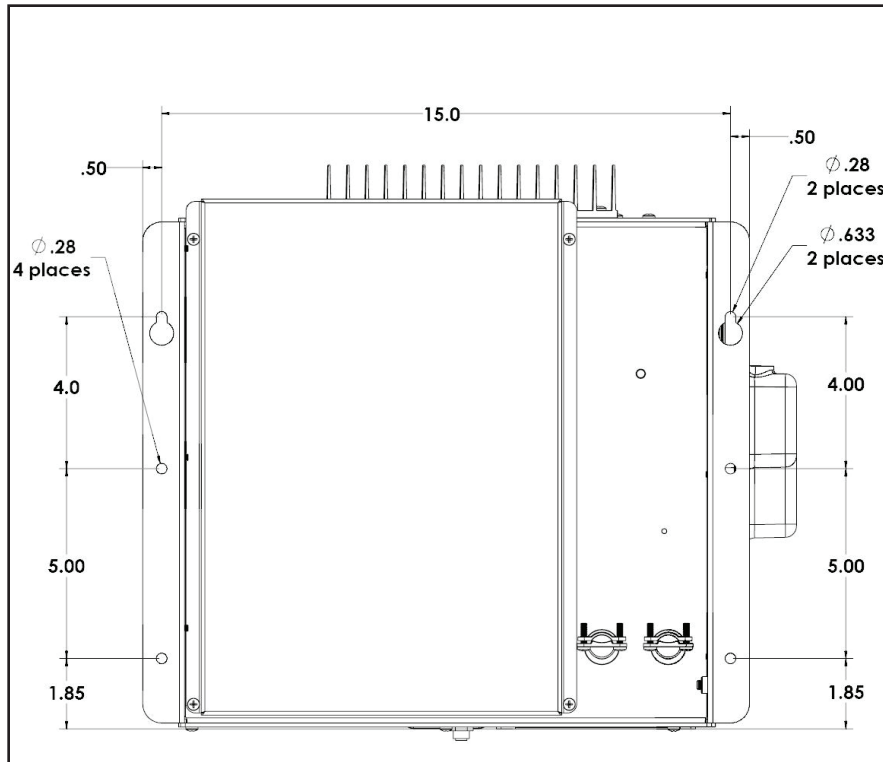
**NOTE:** The inverter mounting location should provide adequate ventilation and clearance to maintain room temperature during operation. At least 1/2" of clearance is required on all sides.

1. Locate a suitable, secure, horizontal mounting surface as close to the batteries as possible without being in the same airtight compartment.
2. Mount the inverter using four, 1/4"-20 steel bolts, flat and lock washers, and nuts. The length of the bolts should be equal to the mounting material thickness plus 3/4".

Mounting Diagram for Models: 1000TQ-12, 15000TQ-12, & 2000TQ-12



Mounting Diagram for Model: 3000TQ-12



**V) DC WIRE GAUGE AND FUSING**

An "Inverter Cable Kit" (positive cable, negative cable, and proper fuse) is needed to connect the inverter to a battery bank. An 8-gauge single conductor cable is also recommended to connect the inverter's bonding lug to ground.

The inverter cable length and the size of the inverter will determine the cable gauge and the fuse size to use. The maximum inverter cable recommended is 20 feet; it must be fused within 18 inches from the positive (+) terminal of the battery.

Cross reference the inverter model, and the estimated cable length in the table below to determine the proper cable gauge and fuse size.

Minimum Cable and Fusing Guide at 5% Voltage Drop at Full Output				
Inverter Model	Full Load (Amps DC)	Inverter to Battery Estimated Cable Length in Feet		
		1 to 10 feet	11 to 15 feet	16 to 20 feet
1000TQ-12	104	4-ga, 200A Fuse	2-ga, 250A Fuse	1-ga, 300A Fuse
1500TQ-12	156	2-ga, 250A Fuse	1-ga, 300A Fuse	2/0, 400A Fuse
2000TQ-12	204	1-ga, 300A Fuse	2/0, 400A Fuse	3/0, 500A Fuse
3000TQ-12	315	2/0, 500A Fuse	3/0, 500A Fuse	Not Recommended

NOTE: Newmar model AFB-500 ANL fuse holder is recommended. Newmar stocks ANL fuse sizes 50 - 500 amp.

To make your own "Inverter Cable Kit," follow below recommendations:

1. Use stranded copper cables in all cases.
2. USE SGX cross-linked polyurethane insulation type that complies with the high temperature insulation requirements (125°C.) of SAE J-1127 and vehicle manufacturer requirements.

**VI) TEMP COMP CABLE CONNECTION**

Connect the lug end of the temperature compensation cable to the negative post of the most negative point in the battery bank. Connect the two pin connector to the appropriate mating connector located at the side of the inverter labeled "Temp. Sense." Use the slide switch on the right side of the inverter and select the battery type that you are using for proper battery charging.

NOTE: If the temp. Comp. Cable or Dongle is not connected; the battery charger will not function. Factory default is Dongle installed.

## VII) AC INPUT & OUTPUT CONNECTIONS

**WARNING:** Do not connect another source of AC power directly to the output of the inverter. This will result in damage not covered under warranty.

The inverter's 120 VAC output power is provided at the GFCI receptacle and the hard wire terminal blocks behind the access panel.

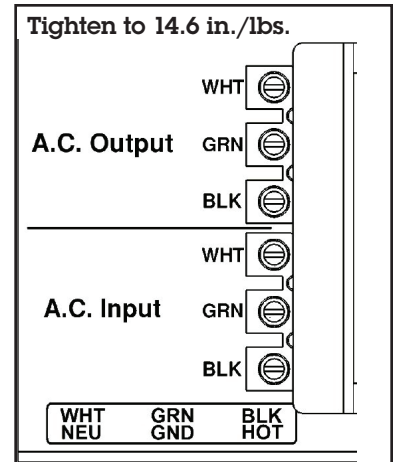
Wire the AC Input to the hard wire terminal blocks behind the access panel for charging and shore power.

**NOTE:** Remove the black hole covers as needed for hardwire AC wiring. Use the provided cord grips to protect the wires from the metal edge of the hole. Apply 14.6 in/Lbs torque to the terminal block screws.

**NOTE:** Systems rated at 2500 watts and above should be powered with a 30A circuit.

**NOTE:** Connecting the plug-in cord to GFCI protected outlets may cause some interference with the inverter's GFCI.

**NOTE:** For GFCI protected hardwire output. Wire directly to the GFCI "Load" terminals. Verify that you are connecting to the un-used "Load" terminals.



## II) REMOTE INSTALLATION OF THE LED STATUS PANEL & REMOTE INVERTER ON/OFF SWITCH

### Remote Status Panel

The LED display panel can be removed from the inverter front panel and installed up to 25 feet away for remote control and monitoring. This requires Remote Extension Kit, model TQ-REK. Please review the following procedure closely.

Unscrew the two screws that hold the panel in using a 3/32" allen wrench. Disconnect the RJ45 connector from the back of the remote panel and re-connect it to the backside of the replacement RJ45 cover plate.

**WARNING:** Mount the RJ45 cover plate on the inverter with the two screws provided in the remote extension kit (8-32x3/8"). **DO NOT USE** the screws that held the display to mount the RJ45 cover plate. Using any other screw type or length than that provided in the kit may damage the inverter and/or harm the installer. Tighten the screws to 16-17 in/Lbs.

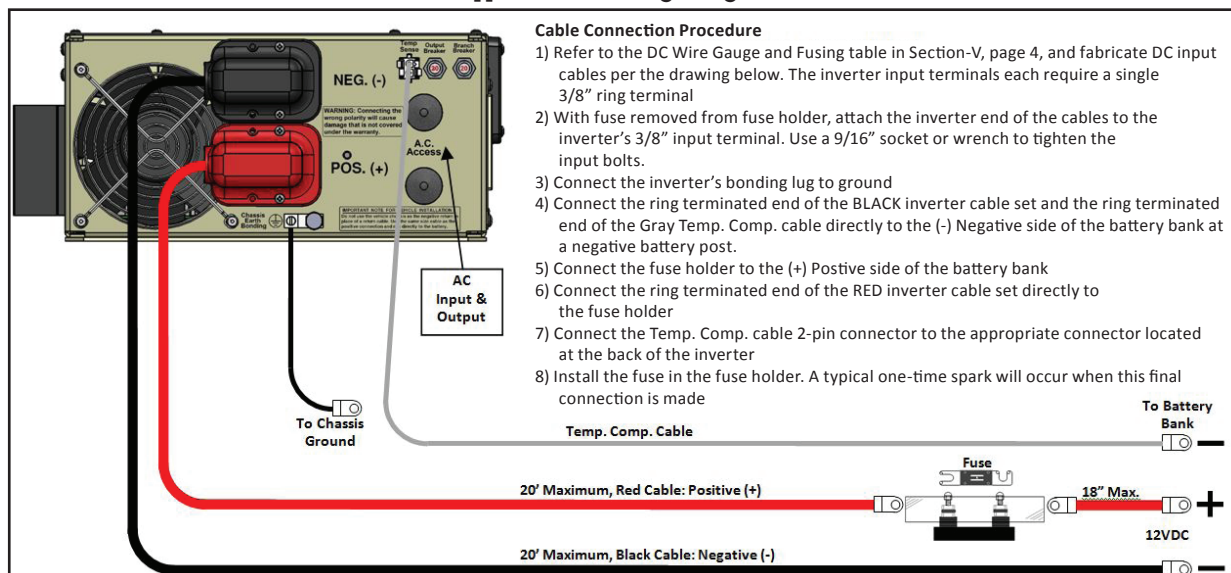
Connect the extension cable to the RJ45 jack and route through the vehicle to the desired location. See the appendix for mounting hole size and placement information. Install the remote display panel at the desired new interior location using installer supplied #8 screws and connect the extension cable to it.

### Remote Inverter ON/OFF Switch (Installer Supplied)

An optional installer supplied remote switch can also be used to control the inverter. Mount the remote switch in a convenient location. Using 18 awg wire and an insulated female 1/4" faston, wire between the "Remote ON/OFF" connection on the right side of the inverter and the remote switch. Wire from the remaining connection on the remote switch to the positive (+) side of the battery. Make sure to have a 5-amp in-line fuse installed in series within 10 inches from the positive (+) terminal of the battery.

## IX) DC WIRING

### Typical DC Wiring Diagram



## X) OPERATION (Using LED Display Panel)

Once the inverter has been fully installed and wired, and DC power has been applied, the 7 segment display panel will come to life. This display panel shows the status and configuration information of the inverter and charger. You can also turn the inverter on and off by pressing the [ON/OFF] key and also make configuration changes using the [MENU] and [DISPLAY/SELECT] keys.

**NOTE:** This LED Display Panel can be removed from the front of the inverter and mounted in a convenient and dry location (e.g.; in the cab of a vehicle). Order remote extension kit, model TQ-RMK.

**NOTE:** The inverter can also be controlled by the ignition of the vehicle, see Appendix for detailed information on this feature.

The first message that you will see scroll on the 7 Segment Display once DC power is applied is:

chgr      Inu      OFF      chEc      Ac

This message is "charger inverter off check AC," which simply means that both the charger and inverter are off and that the unit is not plugged into shore power or there is a problem with AC power coming to the unit.



### A) Inverter Power Mode (Using LED Display Panel)

#### 1) Turning the Inverter "ON" or "OFF" (no AC applied):

Simply press the [ON/OFF] key and the inverter will turn on. The "ON/STBY" LED will also come on green. Press the [ON/OFF] key again to turn the inverter off.

While the inverter is on the following message will display:

Inu      550      12.6v      550

This message shows that the inverter is on, the load is consuming 550 watts of power, and that the battery voltage is currently at 12.6 volts.

#### 2) Inverter "Stby"

The inverter standby feature allows the inverter to automatically come on anytime that it senses a loss of shore power and then go back to standby when shore power is returned (after 22 seconds of line qualify time).

This feature is enabled by turning the inverter on by pressing the [ON/OFF] key. If this is done while shore power is applied the "ON/STBY" LED will come on Amber and the display will show:

Inu      Stby      PUSH      OFF

This message is stating that the inverter is in standby and that to exit this mode you need to press the [ON/OFF] key.

NOTE - To exit Inverter standby mode, press the [ON/OFF] key.

If you turn off the inverter while shore power is applied the display will show:

Inu      OFF      PUSH      Stby

This message is stating that the inverter is off and that to put it back to standby you need to push the [ON/OFF] (Stby) key.

#### 3) Other inverter messages:

Inu      OFF      PUSH      Stby

Low battery condition due to start surge or undersized battery cable gauge. If this condition remains for => 5seconds the inverter will shutdown.

Inu      0uL      bAtt      11.8v

Overload condition due to excessive loads or short circuit. If this condition remains for => 5seconds the inverter will shutdown.

#### 4) Battery Test

The battery voltage can be tested at anytime by pressing the [BATT TEST] key. The mode will stay active for 1 minute or until the [BATT TEST] or [MENU] key is pressed.

12.6v



### 5) Battery Trough (low battery voltage point)

If while using the inverter, the inverter temporarily shuts down due to a low DC input condition, you can check to see how low the DC input voltage momentarily went to. To see this value, press the [BATT TEST] key. Then press the [DISPLAY/SELECT] key. The display will show "LO BATT" followed by the recorded minimum low input condition (trough) voltage. The mode will stay active for 1 minute or until the [BATT TEST] or [MENU] key is pressed. The following message shows the low point at 10.1 volts.

Lo

bAtt

10.1v

If there is not a value stored, the message will just say "Lo batt ---" and not list any voltage.

You can clear the stored value manually by pressing the [DISPLAY/SELECT] key while the message is scrolling. You will then see the following flash twice:

clr

bAtt

A newly recorded value will also clear the old value and replace it with the new.

### 6) Auto Sleep Mode

This feature is used to turn the inverter off if there has been zero watts drawn for the set amount of time. For example if the sleep mode is set to 30 minutes and 30 minutes of time has elapsed with no power being drawn from the inverter, the inverter will shut off. The inverter must then be manually turned back on again when needed. You can adjust this setting by pressing the [MENU] key twice. You will then see:

Auto

SLEP

OFF

To change the setting press [DISPLAY/SELECT] repeatedly until the desired setting appears. The options are OFF, 30M, and 15M. The default setting is Off.

### B) External Power Mode (Using LED Display Panel)

**1) Bypass Relay:** The loads attached to the inverter output will operate directly from the external AC power line independently of the inverter ON/OFF status. If the inverter is left ON (standby mode), the built-in bypass relay will automatically cycle back and forth between "Inverter Power" mode and "External Power" mode depending on the availability of the external AC power line.

### BATTERY CHARGER

The battery charger will engage automatically and independently of the inverter ON/OFF status. The 3-step charging process modes are; Bulk, Acceptance, and Float.

### 2) AC Input Limit (Charger AC current limit)

The maximum AC current that the charger will be allowed to draw is adjustable. This value can be set to 30-0A (maximum value is factory set based on model). The default setting is for 15 amps. Press [MENU] to display the current setting. The message will then scroll:

AC

In

Lit

15A

To change the value press [DISPLAY/SELECT] and the value will decrease in 5A increments. The charger stores the last value shown on the display.

### 3) Charger Modes

The charger has three modes of operation; Bulk, Accept, and Float. The display panel will state which mode the charger is in when shore power is applied. The mode along with the charge voltage and current will be displayed.

Bulk Mode:

chgr

BUkH

12.3v

50A

Accept Mode:

chgr

AcPt

14.4v

15A

Float Mode:

chgr

FLDt

13.1v

0A

#### 4) Temperature Compensation Cable or Dongle

If the temperature compensation Cable or Dongle is not connected to the "Temp. Sense" connector on the inverter; the battery charger will not function, the red "FAULT" LED will come on, and the display will show:



Check to make sure that the cable is connected.

### XI) OPERATION (Using Remote ON/OFF tab)

Once the inverter and remote On/Off switch have been fully installed and wired, and DC power has been applied, the inverter is ready to turn on. The Status LED on the right side of the inverter shows the status information of the inverter and charger.

#### A) Inverter Power Mode

##### 1) Turning the Inverter "ON" or "OFF" (no AC applied):

The inverter can now be turned on by turning on the remote switch. When the inverter is on the Status LED will blink Amber.

#### B) External Power Mode

##### 1) Bypass Relay:

The loads attached to the inverter output will operate directly from the external AC power line independently of the inverter ON/OFF status. If the inverter is left ON (standby mode), the built-in bypass relay will automatically cycle back and forth between "Inverter Power" mode and "External Power" mode depending on the availability of the external AC power line.

### **BATTERY CHARGER**

The battery charger will engage automatically and independently of the inverter ON/OFF status. The 3-step charging process modes are; Bulk, Acceptance, and Float.

#### 2) Battery Charging Modes

The charger has three modes of operation; Bulk, Accept, and Float. The Status LED will state which mode the charger is in when shore power is applied.

Charging Status LED Normal States		
LED Color	LED State	Operating Conditions
Green	1 blink	Bulk Charge
Green	2 blinks	Accept Charge
Green	3 blinks	Float Charge
Green	4 blinks	Load Management Active

#### 3) Temperature Compensation Cable or Dongle

If the temperature compensation Cable or Dongle is not connected to the "Temp. Sense" connector on the inverter; the battery charger will not function and the Status LED will blink Red 5 times.

### XII) THEORY OF OPERATION

#### A) Inverter Power Mode

**Usage:** Any 120 VAC, 60 Hz single phase product within the inverter's power rating.

The Display Panel [ON/OFF] key or a voltage between 8 and 20 volts applied to the "Remote On/Off" input controls the inverter.

**Operational Modes:** "External Power" mode and "Inverter Power" mode.

The LED Display Panel "ON/STBY" LED will be on Green and the Status LED will blink Amber while the inverter is on. The AC power produced by the inverter comes from the energy stored in the battery bank through a sophisticated electronic inversion process. A transformer, a Metal Oxide Silicon Field Effect Transistors (MOSFET), a filter capacitor and microprocessor control are used to generate clean AC power.

The inverter will operate at DC input voltages ranging from 10.5 to 17 volts. Above 17 volts the system will stop operating due to input voltage being out of range. The inverter can tolerate up to 17V DC input. When the input voltage drops to 10.5 volts, the inverter will stop operating due to a low battery condition. When the lead acid battery bank voltage drops to 10.5 volts, the battery is fully discharged.

**Note:** The signal output waveform produced by the inverter when in "inverter mode" is pure sinusoidal. It has a total harmonic distortion of less than 5%.

## B) External Power Mode

The LED Display Panel will show charger mode and output and the Status LED will blink Green indicating that there is a valid external AC power line applied to the inverter AC input.

## C) Bypass Relay

The loads attached to the inverter output will operate directly from the external AC power line independently of the inverter ON/OFF status. If the inverter is left ON (standby mode), the built-in bypass relay will automatically cycle back and forth between "Inverter Power" mode and "External Power" mode depending on the availability of the external AC power line.

## D) Battery Charger

The battery charger will engage automatically and independently of the inverter ON/OFF status. The 3-step charging process modes are; Bulk, Acceptance, and Float.

The LED Display Panel will show charger mode and the Status LED located on the side of the inverter will blink Green to indicate the charging process mode (1 blink = Bulk, 2 blinks = Accept, 3 blinks = Float).

**NOTE:** The charger is capable of charging AGM, GEL, or Wet cell batteries. Select battery type by using the slide switch on the right side of the inverter.

### Charger Operation with Temperature Compensation Cable:

The battery charger temperature compensation cable measures the battery temperature and automatically adjusts the charger output voltage for the fastest and safest charge.

When batteries are cold, their chemical reaction is slowed, so they will not take on a charge as easily. A charge voltage optimized for room temperature will not charge the battery at low temperatures. The temp comp cable allows the charger to increase the charge voltage for optimum charging at low temperatures.

When batteries are hot, their chemical reaction is accelerated and they absorb energy too readily. A charge voltage optimized for room temperature will tend to overcharge the batteries and cause gassing. The temp comp cable will cause the charger to decrease the charge voltage to a safe level.

Our charger will switch to a "warm battery" mode in which the charger will only provide a float voltage when the batteries reach 122° F/50° C - 140° F/60° C. If the battery temperature continues to rise over 140° F/60° C the charger will shut off. The charger will resume charging in the "warm battery" mode when the battery cools to 131° F/55° C. Further, the charger will resume normal charge modes when the battery cools to 113F/45C.

### Charger Operation with Temperature Compensation Bypass Dongle:

Proper battery charging is best achieved by the use of the temperature compensation cable. If this is not feasible then the temperature compensation dongle can be used.

If the charger is used with the Temp Comp Cable Bypass Dongle, the charger will lock in to a hot setting for the charge voltages per the table. The bypass dongle may significantly reduce charger effectiveness at low temperatures and will not sense an overheated battery, and may not avoid a hazardous condition.

3 step Battery Charger Recipes, voltages with Temp Comp Bypass Dongle			
Battery Type	AGM	GEL	Wet
Acceptance charge voltage (VDC)	13.9	13.3	14.2
Float voltage (VDC)	13.0	13.0	12.7

### Load Management:

Incoming AC power is shared between the AC loads and the charger. The AC loads are given priority; this means the charger will reduce its output with large AC loads. This feature controls the total amperage draw of the system so the utility service circuit breaker is not tripped. The Load Management feature will return the charger to full output when the AC loads are removed or reduced.

### Dead Battery Charging:

The charger will operate anytime the AC line is within the valid range. There is no minimum battery voltage required for the charger to start.

### XIII) SPECIFICATIONS

INVERTER	MODEL NUMBER			
	1000TQ-12	1500TQ-12	2000TQ-12	3000TQ-12
Output Power (Watts Cont.)	1000	1500	2000	3000
Output Current (Amps AC Cont.)	8.3	12.5	16.7	25
Input Current (Amps DC Cont.)	Up to 104	Up to 147	Up to 204	Up to 263
Peak Power (Watts)	2000	2500	4500	5500
Peak Output (Amps AC)	35	40	80	80
Motor Starting Rating (hp)	1/3	1/3	1	1
Weight (lbs.)	40	40	40	68
Dimensions in. (L x W x H)	12 x 14.5 x 5.7	13.4 x 14.5 x 5.7	12 x 14.5 x 5.7	14.8 x 17.1 x 8
Output Voltage (VAC)	120 +/- 3%			
Output Frequency:	60 +/- .05%			
Output Waveform:	Pure Sine < 5% THD			
Input Voltage: (VDC)	10.5-17.0			
Operating Temperature:	-20° C to 65° C (0° F to 149° F)			
Efficiency:	Up to 88%			
<b>BATTERY CHARGER</b>				
AC Input Voltage Range (VAC)	95-135			
Input Current (Amps AC)	Up to 8	Up to 12	Up to 16	Up to 22
Output (Amps DC)	Up to 60	Up to 75	Up to 125	Up to 150
BYPASS* (Amps AC)	20	20	30	30

\*Note - Bypass relay is rated at 30 amps for all models.

### XIV) TROUBLESHOOTING

Look at the "LED DISPLAY PANEL MESSAGES" and "LED STATUS CHART" below for LED descriptions. See also the troubleshooting section for more troubleshooting information.

**WARNING: Do not remove chassis cover. No user-serviceable parts inside.**

#### A) LED Display Panel Messages

##### 1) Inverter Off Low Battery



The inverter is off due to a low battery voltage condition (<=10.5 volts for 5 seconds). Both the Amber "ON/STBY" and Red "FAULT" LED's are on. Check battery charge and DC wiring cable size.

##### 2) Inverter Off Overload



The inverter is off due to an overload condition. The Red "FAULT" LED is on. Remove one or more loads from the output of the inverter. Reset the inverter.

##### 3) Inverter Off High Temperature



The inverter is off due to a high temperature condition (>60°C/140°F). Both the Amber "ON/STBY" and Red "FAULT" LED's are on. The inverter will turn back on when the temperature is < 45°C/113°F.

#### 4) Inverter Off High Battery

inU OFF high bAtt

The inverter is off due to a high charging voltage condition (>16.9 volts) and the display reports the value. Both the Amber "ON/STBY" and Red "FAULT" LED's are on. Inverter restarts at 15.5 volts. Check the vehicle alternator/regulator.

#### 5) Charger Off High Temperature

chgr OFF high tEMP

The charger is off due to a high temperature condition (>60°C/140°F). The Red "FAULT" LED is on. The charger will turn back on automatically when the temperature is < 45°C/113°F.

#### 6) Charger Off Battery Temperature

chgr OFF bAtt tEMP

The charger is off due to a high battery temperature (>47°C/117°F-50°C/122°F). The Red "FAULT" LED is on. Check the battery compartment for proper ventilation.

#### 7) Charger Off Battery Probe

chgr OFF bAtt PrOb

The charger is off due to a shorted or open (missing) temperature compensations sensor. The Red "FAULT" LED is on. Check the connections.

#### 8) Charger Off High Battery

chgr OFF high bAtt

The charger is operating in a high DC output voltage condition. The Red "FAULT" LED is on. Disconnect other battery charger or source and reset.

#### 9) Charger Warm Battery

chgr WArM bAtt

The charger reduced output due to warm battery temperature. The Red "FAULT" LED is on. Check battery compartment for proper ventilation.

## B) LED Status Chart

Status LED Normal States		
LED Color	LED State	Operating Conditions
Green	1 blink	Bulk Charge
Green	2 blinks	Accept Charge
Green	3 blinks	Float Charge
Green	4 blinks	Load Management Active
Amber	1 blink	Inverting
Status LED Fault States		
None	Off	No power to unit or internal fault
Any	Constant ON	Internal fault
Red	1 blink	Inverter Low Battery shut down*
Red	2 blinks	Inverter Overload shut down
Red	3 blinks	Transformer High Temp*
Red	4 blinks	MOSFET High Temp*
Red	5 blinks	Battery probe open or shorted
Red	6 blinks	Charger high battery temp*
Amber	2 blinks	Charger warm battery*
Amber	3 blinks	High battery voltage*
Amber	4 blinks	System overload, reset required

Faults marked with\* will self recover when the condition returns to normal range

## C) Troubleshooting Guide

### 1) No AC output power during inverter mode:

No LED's On:

- Check the in-line fuse which is located within 18" from the battery's positive post.
- DC connections tight and clean?
- Battery voltage to be above 10.5VDC?
- Check Remote Power Switch.

LED blinks Amber once: Disconnect all loads and connect a test light to the GFCI outlet.

- Check the GFCI to see if it is tripped (Cooper brand GFCI has the LED go on when tripped, other brands are dark)
- If test light is off: Possible failed inverter

LED blinks Green: Repeat above test

LED blinks Red: See "Led Status Chart"

### 2) Low Battery: The use of a battery isolator is not recommended due to excessive voltage drop across terminals.

- Battery voltage must be above 10.5 VDC for the inverter to be on.
- Check for proper DC wire gauge (see Wire Gauge & Fusing section)

### 3) Overload: Unplug all loads and reset the inverter On/Off.

- Overload condition clears, check for short circuits or check load size versus inverter output wattage size.
- If the overload persists, possible failed inverter

### 4) High Temp.: Let the inverter cool down

### 5) Check Battery: Reset the inverter (unplug/plug AC Input cord from the utility power) and remove the DC input fuse from the fuse holder. Turn "on" the inverter for 30 seconds. Turn "off" the inverter. Re-install the fuse.

- Possible battery cell shorted or corroded/loose DC wires
- Check voltage and current against charger recipe table

## XV) WARRANTY and CONTACT INFORMATION

Newmar warrants that the Torque Series Inverter-Charger to be free from defects in material and workmanship for two years from date of purchase. If a problem with your Inverter-Charger, or if you have any questions about the installation and proper operation of the unit, please contact NEWMAR's Technical Services Department:

**Phone:** 714-751-0488 - From the hours of 7:30 a.m. to 5:00 p.m. weekdays, P.S.T.;

**Fax:** 714-957-1621

**E-mail:** techservice@newmarpower.com



## XVI) APPENDIX

### A) Ignition Switch Control with LED Display Panel

The LED Display Panel can be wired to the vehicle ignition circuitry to control operation of the inverter. When the ignition is turned on, the inverter has a built-in delay which will turn it on after 10 seconds. In order for the inverter to work in this way the LED Display Panel must be programmed for this type of operation. This is done by having either AC or DC power applied to the inverter and then following these instructions:

#### Ignition Programming

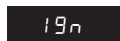
1. Press and hold [MENU] & [DISPLAY/SELECT] for 5 seconds. A Green "FAULT" LED comes on.
2. Press [MENU] once. Display scrolls:



3. Press [DISPLAY/SELECT]. Display stops at:



4. Press [DISPLAY/SELECT] and the display changes to:



The "ON/STBY" LED will also blink Amber (if unit is connected to AC power).

5. Press the [BATT TEST] key. Disconnect power to the system and complete wiring as stated below.

The next step is to use an insulated female faston and using 18 awg wire, connect to the faston tab on the backside of the LED Display Panel. Wire the other end through a 5 amp inline fuse to the ignition circuitry of the vehicle.

**NOTE:** It is advisable when using this feature to also take advantage of the Auto Sleep option of the inverter. See page 5, item 5. If this option is used and the inverter has gone to sleep, press [ON/OFF] to turn the inverter back on.

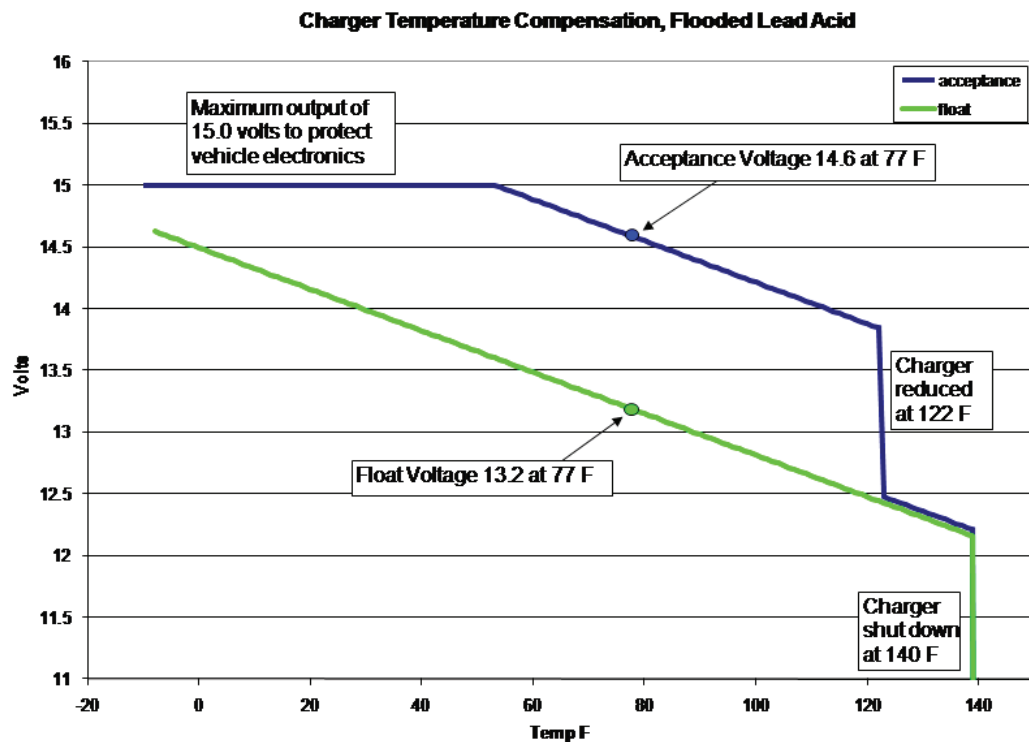
**NOTE:** Repeat steps 1-5 to turn this feature off again.



### B) 3 Step Battery Charger Recipes with Temp. Comp. Cable

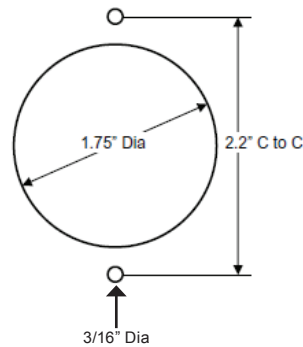
Battery Type	AGM	GEL	Wet	
<b>Bulk Charge Phase</b>				
<b>Bulk</b>	Bulk charge current limit	SEE SPEC (PAGE 9)		
	Bulk phase terminates	1. When battery voltage reaches the Acceptance voltage 2. When the bulk timeout is reached		
	Bulk phase timeout	6 hours	6 hours	6 hours
Bulk timers will extend when load management reduces charger current below 50% (25A)				
<b>Acceptance Voltage Temp Comp</b>				
<b>Acceptance</b>	Acceptance charge voltage @ 77F/25C	14.3 VDC	13.7 VDC	14.6 VDC
	Maximum acceptance voltage at low temps	15.0 VDC @ 4C	14.5 VDC @ -6C	15.0 VDC @ 10C
	Acceptance phase terminates	1. When charge current is reduced 2. When the acceptance timeout is reached 3. If the charger can't maintain the Acceptance voltage		
	Acceptance phase timeout	6 hours		
<b>Float Charge Phase</b>				
<b>Float</b>	Float voltage @ 77° F/25° C	13.4 VDC	13.4 VDC	13.2 VDC
	Float voltage temp comp	5mv/cell/°C		
<b>Battery Temperature</b>				
<b>Battery Temp</b>	Charger Warm Battery: output switches to compensated float from Bulk/Accept/Off (hot)	>122° F/50° C <140° F/60° C		
	Charger High Battery Temp: Output to Off	>140F/60C		
	Charger Resumes in previous mode: Bulk/Accept/Float	<112F/45C		

### C) Charger Output vs. Temperature



### D) Remote Installation of LED Display Panel, Mounting Specifications

The LED Display panel requires a 1.75" mounting hole and screw positions as shown below. Use a #8 screw for mounting the display:



### E) Optional Accessories

Model Reference	Description
TQ-REK	Extension kit for remote mounting of LED display. Consists of 25' extension cable and a panel blank with RJ45 connector that installs in place of LED display on front panel of inverter.
AFB-500	Installation base for ANL fuse, 500A max capacity with protective cover. Order fuses separately.
ANL Fuse	Specify rating; 100 to 500 (50 amp increments)

